



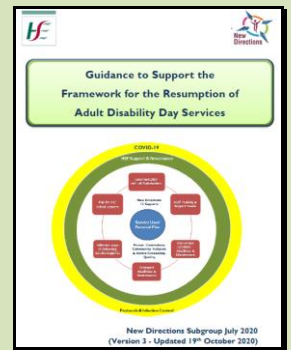
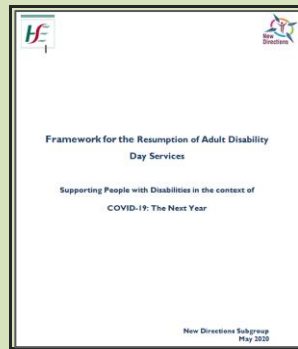
Adult Disability Day Services and COVID-19 What's Happening December 2020?



Day Service Locations are Opened again since August

- Adult Disability Day Service Locations gradually resumed during the month of August. All day service locations are open except for locations that are being used for isolation purposes.
- People whose day service location is being used for isolation or other COVID reasons are receiving outreach supports whilst a new location is being sourced.

- National Guidance to Support the Framework for the Resumption of Adult Disability Day Services has recently been updated and is available on www.hse.ie/newdirections



- 2020 School Leavers are now being introduced to Adult Disability Day Services.



- Aside from receiving supports at service locations, many people are also receiving remote supports and some people are receiving their day supports in their home.



What services are being provided at the moment?

- At the end of September information was collected from all disability day service providers to establish the amount and type of services that adults are currently receiving.
- At the end of September there was an average of 40% day service being provided to adults at Disability Day Service Locations. As well as the service provided at day service locations, remote supports and some day supports in the home are also being provided.
- All efforts are being made to try and increase the supports provided to service users that had been receiving reduced supports since March.



What is happening to increase the level of Service?

Funding has been provided to increase the amount of day service that each person is receiving:

€5 Million

- €5 million once off funding related to COVID pressures was allocated in September to support service providers to increase the amount of service that they can provide by:



- lease/renting community buildings to provide more space and enable more service users to attend on a daily basis.
- refurbishing existing buildings so more service users can attend each day.
- funding additional transport to support some people to get to and from their day service locations.



€7.5 Million

- Some staff from day services have been covering rosters in residential services since March. New posts have been funded for a one year period to let day service staff return to day service locations and increase the service provided at those locations.

Funding for Technology

- Funding was provided to day service locations to purchase technology to enable day service users engage with additional remote supports.



It takes time to complete refurbishment of buildings and recruit staff so some people may not see an increase to the amount of day services they receive until their provider has completed the work.

What is Important for you at this time?

- To ensure the safety of people who use day services and our staff, services providers continue to operate in line with current public health guidance.
- The HSE and service providers are working to maximise appropriate supports to day service users during this time.
- Providers are obliged to stay in contact with service users who are not availing of services during COVID. We would ask that service users and families engage with their day service provider to ensure their placement is continued.
- Further information and contact details for all day service locations are available on the New Directions website at www.hse.ie/newdirections



COVID-19 National Public Health Guidance

Maintain Social Distancing • Hand Hygiene • Cough Etiquette • Personal Protection Equipment

Prevention



Wash
your hands well and often to avoid contamination



Cover
your mouth and nose with a tissue or sleeve when coughing or sneezing and discard used tissue



Avoid
touching eyes, nose, or mouth with unwashed hands



Clean
and disinfect frequently touched objects and surfaces